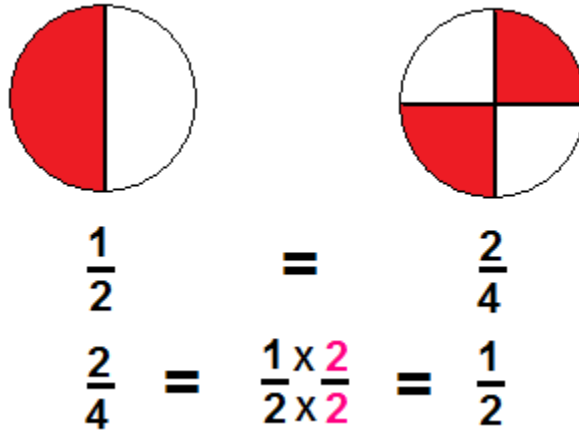
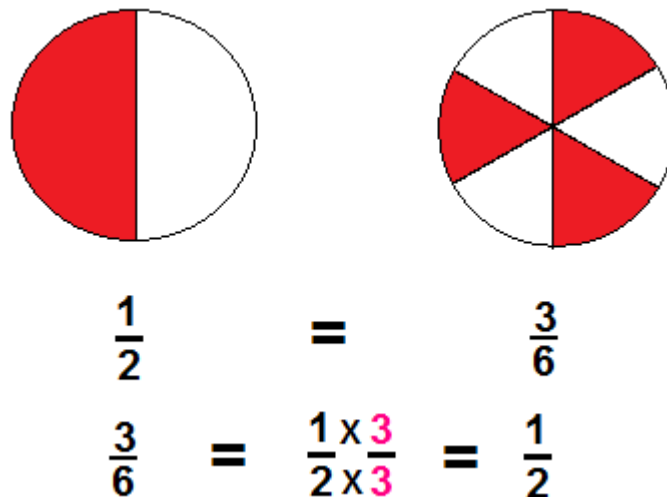


*Fraction & Equivalence*

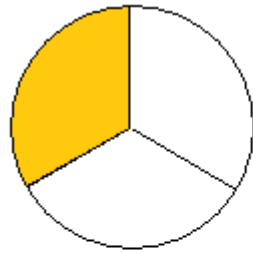
Equivalence 1 :



Equivalence 2 :

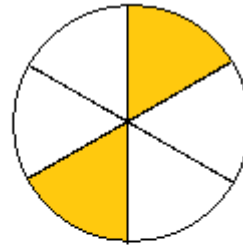


## Equivalence 3 :



$$\frac{1}{3}$$

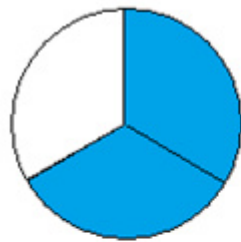
=



$$\frac{2}{6}$$

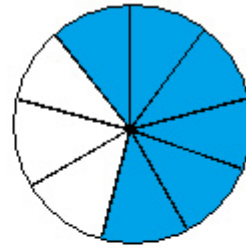
$$\frac{2}{6} = \frac{1 \times 2}{3 \times 2} = \frac{1}{3}$$

## Equivalence 4 :



$$\frac{2}{3}$$

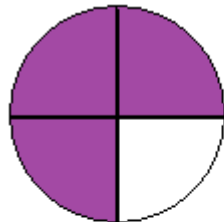
=



$$\frac{4}{6}$$

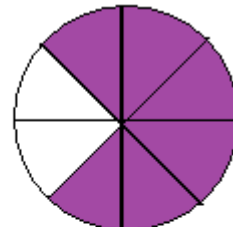
$$\frac{4}{6} = \frac{2 \times 2}{3 \times 2} = \frac{2}{3}$$

## Equivalence 5 :



$$\frac{3}{4}$$

=



$$\frac{6}{8}$$

$$\frac{6}{8} = \frac{3 \times 2}{4 \times 2} = \frac{3}{4}$$